

Cotton Arbitration & Testing General Organization

CATGO

Information & Documentation Center

IDC

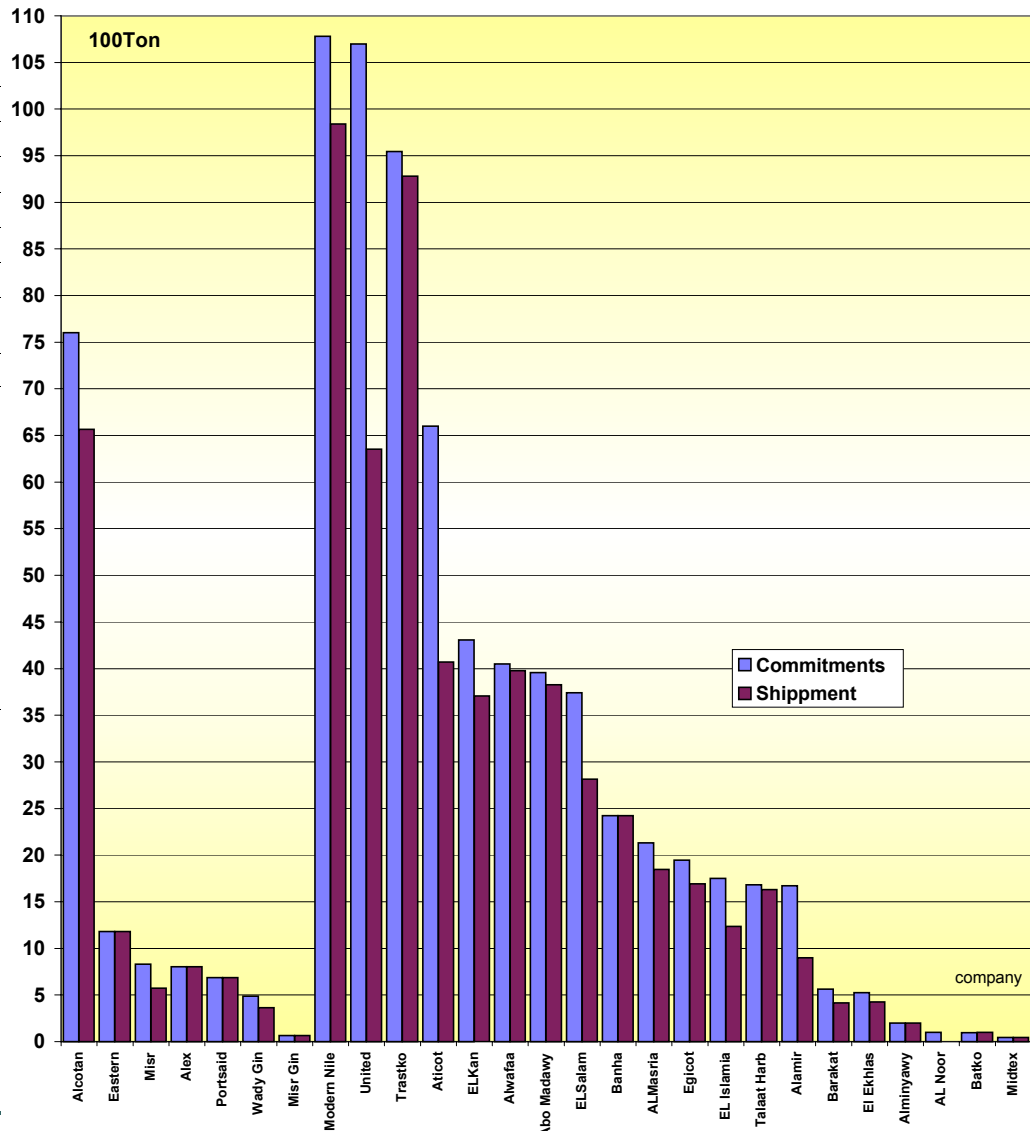


Distribution Commitments

Per Each Company From 01/09/2011 to 30 / 06 / 2012

Season 2011 / 2012 (by Tons)

Company	Commitments	%	Shippment	%	%
Alcotan	7,602.00	9.69%	6,567.00	10.10%	86.39%
Eastern	1,181.00	1.51%	1,181.00	1.82%	100.00%
Misr	829.00	1.06%	572.00	0.88%	69.00%
Alex	802.00	1.02%	802.00	1.23%	100.00%
Portsaid	688.00	0.88%	688.00	1.06%	100.00%
Wady Gin	487.42	0.62%	362.42	0.56%	74.35%
Misr Gin	65.00	0.08%	64.50	0.10%	99.23%
Total Public Sector	11,654.42	14.85%	10,236.92	15.74%	87.84%
Modern Nile	10,781.00	13.74%	9,840.00	15.13%	91.27%
United	10,698.00	13.63%	6,352.00	9.77%	59.38%
Trastko	9,546.00	12.17%	9,279.5	14.27%	97.21%
Aticot	6,600.00	8.41%	4,069.00	6.26%	61.65%
ELKan	4,308.00	5.49%	3,708.00	5.70%	86.07%
Alwafaa	4,051.00	5.16%	3,979.50	6.12%	98.24%
Abo Madawy	3,956.00	5.04%	3,828.50	5.89%	96.78%
ELSalam	3,741.00	4.77%	2,815.90	4.33%	75.27%
Banha	2,422.00	3.09%	2,423.00	3.73%	100.04%
ALMasria	2,132.00	2.72%	1,847.50	2.84%	86.66%
Egicot	1,945.00	2.48%	1,693.50	2.60%	87.07%
EL Islamia	1,750.00	2.23%	1,235.50	1.90%	70.60%
Talaat Harb	1,682.00	2.14%	1,631.00	2.51%	96.97%
Alamir	1,670.00	2.13%	898.00	1.38%	53.77%
Barakat	564.00	0.72%	416.00	0.64%	73.76%
Ei Ekhlis	525.00	0.67%	425.00	0.65%	80.95%
Alminyawy	200.00	0.25%	200.50	0.31%	100.25%
AL Noor	100.00	0.13%			
Batko	97.00	0.12%	98.00	0.15%	101.03%
Midtex	45.00	0.06%	45.00	0.07%	100.00%
Total Private and investment Sector	66,813.00	85.15%	54,785.40	84.26%	82.00%
Total	78,467.42	100.00%	65,022.32	100.00%	82.87%



ton = 1000 Kg = 20 Lint cotton kantar

Chairman
Dr.Eng./ Mahmoud ELBagoury